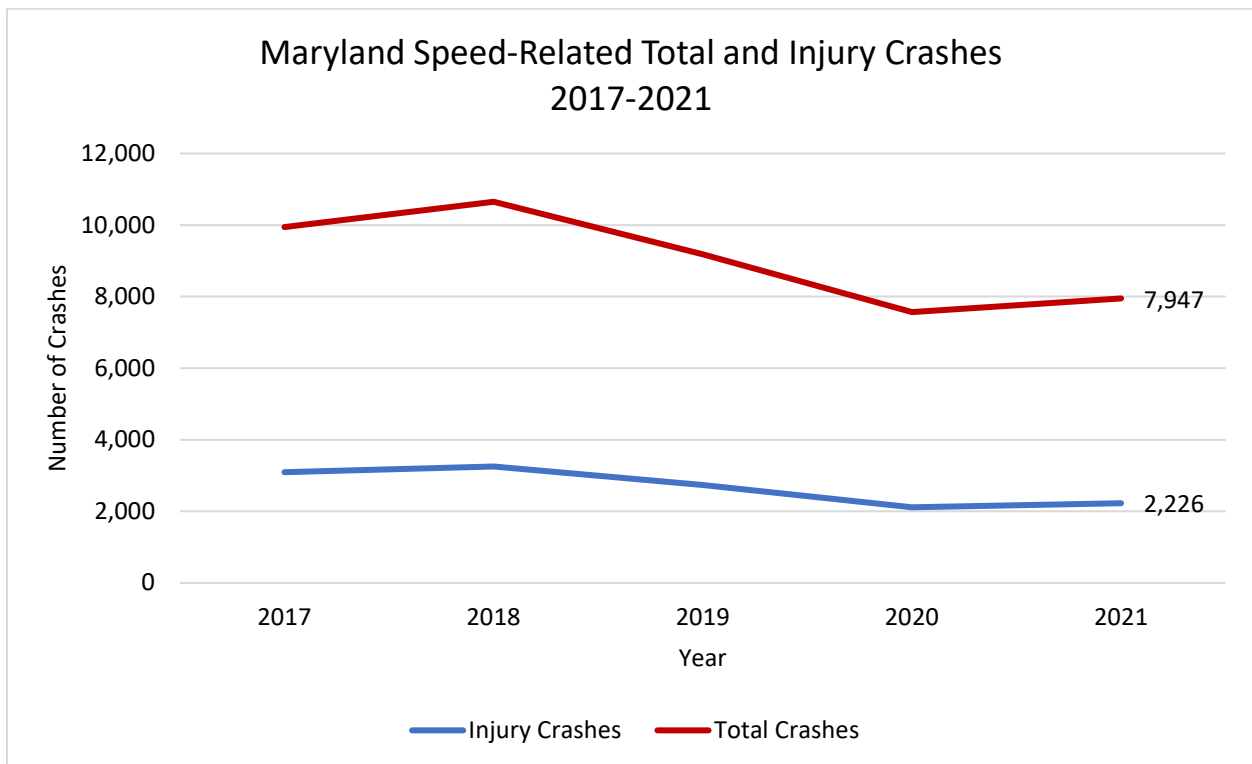


BACKGROUND

Speed is a significant aggressive driving behavior and is estimated to be a contributing factor in over one-third of all fatal crashes nationwide. In 2020, speeding was a contributing factor in 29 percent of all traffic fatalities¹. In addition, NHTSA early estimates indicated that fatalities in speed-related crashes increased by 5 percent in 2021 when compared to 2020².

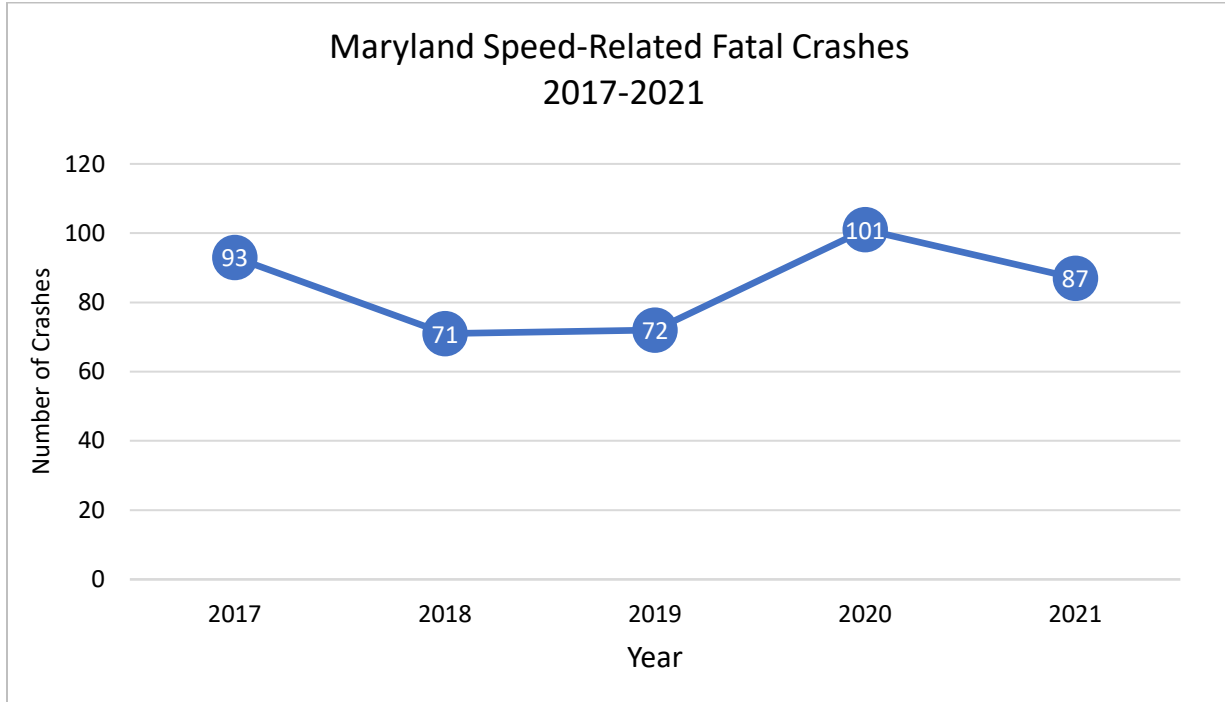
The probability of death and debilitating injury grows with impacts at higher speeds—doubling for every 10 MPH over 50 MPH that a vehicle travels. The Federal Highway Administration found that, on average, 70 percent of motorists exceed the posted speed limits.

THE FACTS



¹ <https://www.nhtsa.gov/risky-driving/speeding> --

² National Highway Traffic Safety Administration (NHTSA) Traffic Safety Facts: Early Estimates of Motor Vehicle Traffic Fatalities and Fatality Rate by Sub-Categories in 2021, Report Generated: May 2022
<https://crashstats.nhtsa.dot.gov/Api/Public/ViewPublication/813298>



- Motor vehicle crashes are a huge threat to public health.** Motor vehicle crashes continue to be a leading cause of death in the United States³. In 2020, approximately 5.3 million crashes were reported, representing a 22 percent decrease from year 2019⁴. However, according to NHTSA early estimates, fatalities in 2021 increased by more than 10 percent over fatalities in 2020. Due to an increase in vehicle miles traveled, the fatality rate for 2021 was 1.33 fatalities per 100 million VMT, representing a slight decrease from the 1.34 fatality rate in 2020⁵.
- The number of speed-involved⁶ crashes in the State has fluctuated between 2017 and 2021.** There was an average of nearly 9,100 crashes related to speed between 2017 and 2021 in Maryland, ranging from a high of 10,651 crashes in 2018 to a low of 7,568 in 2020 before

³ CDC Morbidity and Mortality Weekly Report (MMWR)– Motor Vehicle Crash Deaths — United States and 28 Other High-Income Countries, 2015 and 2019, July 1, 2022

⁴ National Highway Traffic Safety Administration (NHTSA) Traffic Safety Facts 2020 Data: Summary of Motor vehicle Crashes, Report Generated: September 2022

<https://crashstats.nhtsa.dot.gov/Api/Public/ViewPublication/813369>

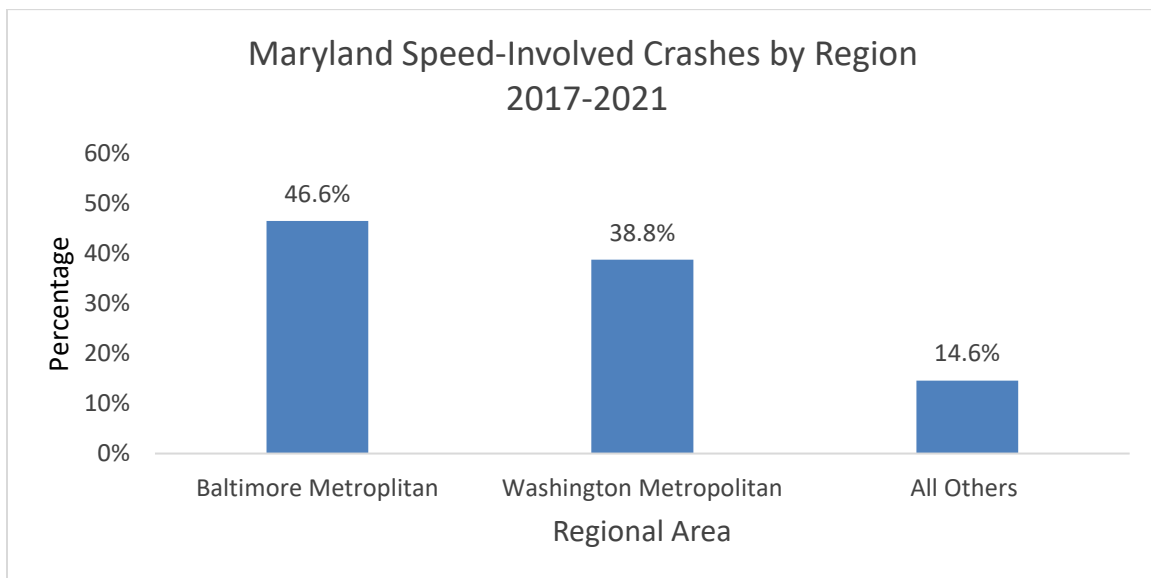
⁵ National Highway Traffic Safety Administration (NHTSA) Traffic Safety Facts: Early Estimates of Motor Vehicle Traffic Fatalities and Fatality Rate by Sub-Categories in 2021, Report Generated: May 2022

<https://crashstats.nhtsa.dot.gov/Api/Public/ViewPublication/813298>

⁶ Speed-involved Crashes: At least one driver in the crash was reported to be speeding, defined by having values of either Exceeded Speed Limit or Too Fast for Conditions in the first or second contributing circumstance fields.

increasing by 5 percent to 7,947 in 2021⁷. The number of injury crashes followed a similar trajectory. However, the number of speed-related crashes that resulted in death and the associated number of fatalities decreased by 14 and 13 percent, respectively, over the last year.

- **Injuries and fatalities are high among speed involved crashes.** On average, all crashes resulting in injury or death accounted for approximately 29 percent of the total crashes in the State. However, among speed-related crashes, 31 percent resulted in an injury or fatality, amounting to, on average, nearly 2,800 injury and fatal crashes per year.
- **Metropolitan areas have the highest concentration of speed-related crashes⁸.** Between 2017 and 2021, around 85 percent of all speed-related crashes occurred in the Baltimore and Washington metropolitan areas. On average, Baltimore County accounted for approximately 18 percent of Maryland’s speed-related crashes. Approximately, one-half of the speed-related fatal crashes in Maryland occurred in Prince George’s County (19 percent), Baltimore County (15 percent), and Baltimore City (17 percent).



⁷ In 2020, the world experienced the COVID-19 pandemic which contributed to significant changes in roadway travel and driver behavior. Reduced vehicle miles traveled, and open roadways resulted in an increase in speed and other risky driving behaviors. While overall fatalities increased in 2020, the reduced travel contributed to marked decreases for injury and overall crashes at the statewide and jurisdictional level. Therefore, this anomalous year must be considered when drawing conclusions based on the use of 2020 crash data to evaluate highway safety programs and trends. With COVID still very much a part of life in 2021, though with a gradual return to openness and increased travel, 2021 must also be considered in the context of a national health emergency.

⁸ Baltimore Metropolitan area is comprised of Anne Arundel, Baltimore, Carroll, Harford, Howard and Queen Anne’s Counties, and Baltimore City as designated by the Baltimore Metropolitan Council. The Washington Metropolitan Area is defined as Charles, Frederick, Montgomery, and Prince George’s Counties as designated by the Metropolitan Washington Council of Governments.

- **Speed-involved crashes are lowest during the middle of the year.** Total crashes related to speed peaked during the late fall and early winter months (October, November, December, January, and February). The more severe crashes resulting in death occurred most often in May, June, August, October, and December.
- **Weekdays and afternoons to early evening hours experience the highest number of speed-related crashes.** More than 70 percent of all speed-related crashes occurred between Monday and Friday. Most fatal crashes occurred on Saturdays (18 percent), though more injury crashes occurred on Fridays (16 percent) than on any other day of the week. Speed related crashes were highest between 12 noon and 7 p.m., accounting for nearly 42 percent. Fatal speed-related crashes were more likely to occur between 4 p.m. and 3 a.m., comprising nearly 60 percent of such crashes.
- **Speeding drivers tend to be younger, in their twenties.** Thirty-four percent of all speeding drivers involved in crashes were between the ages of 20–29, despite accounting for approximately 21 percent of the drivers in statewide crashes. Over one-third of all speeding driver fatalities were in their twenties. On average, speeding drivers in their twenties were injured three times or killed more than twice as often as speeding drivers in their forties.
- **Drivers who are speeding and involved in a crash tend to be male.** Males accounted for 62 percent of speeding drivers involved in a crash. On average, more than four times as many male drivers who speed die in a speed-related crash than do their female counterparts.

**85 percent of
speeding driver
fatalities are male.**

###