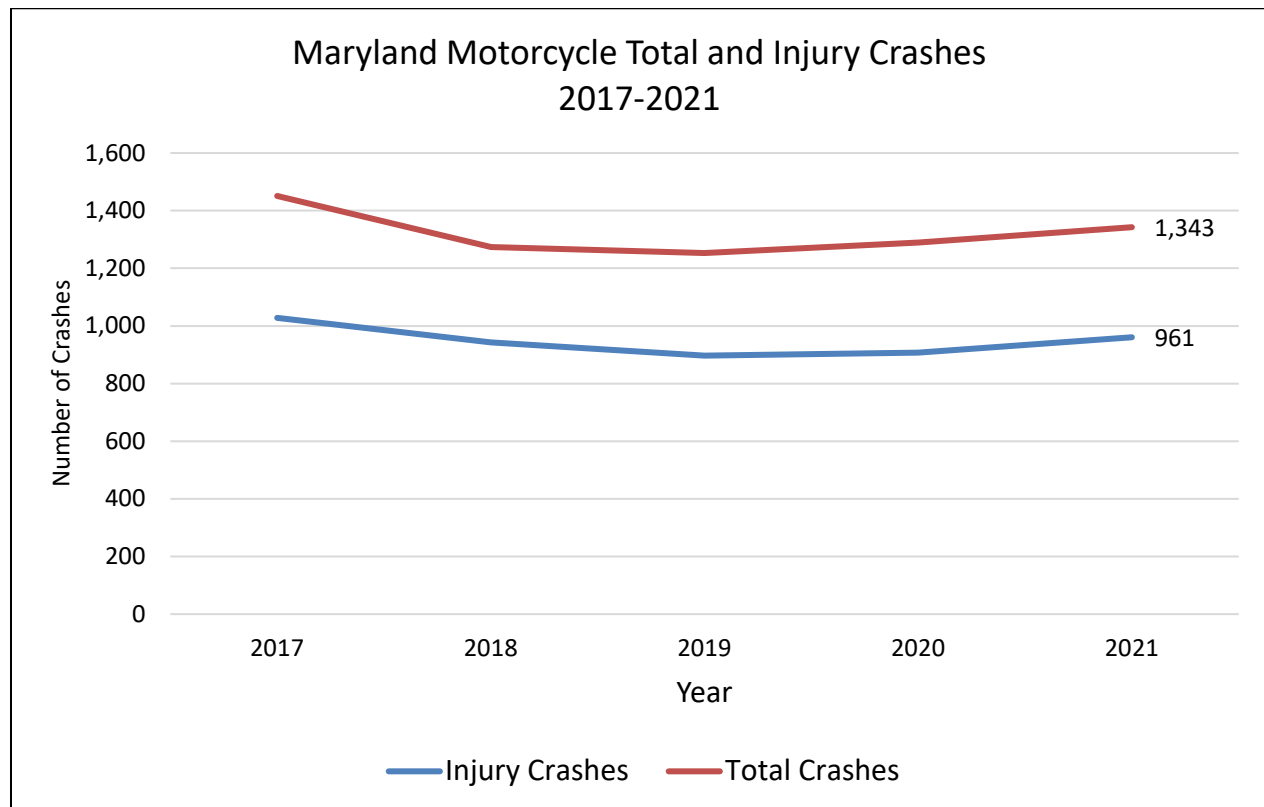


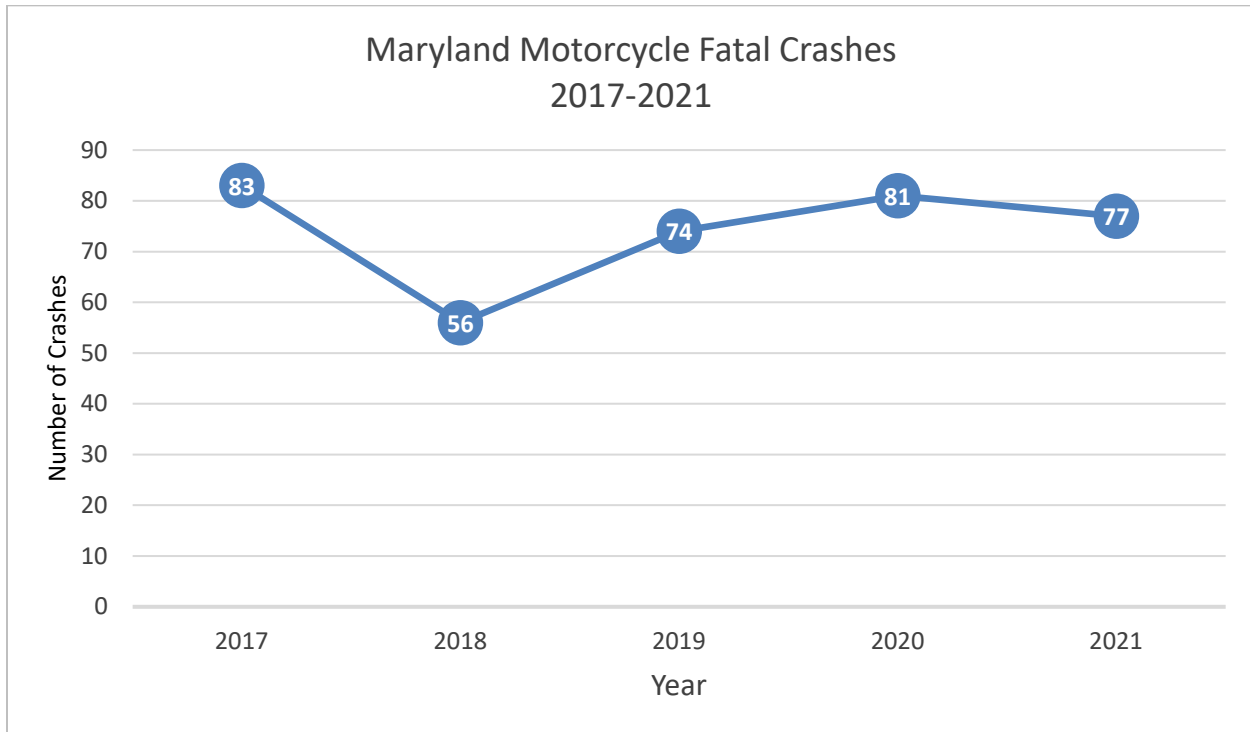
BACKGROUND

Each year in Maryland, an average of 73 motorcycle riders and passengers are killed in traffic crashes and nearly 1,015 riders and passengers are injured each year. Drivers *and* riders have the responsibility to share the road safely. When there is a crash involving a motorist and a motorcycle, the motorcyclist always loses. Because motorcycle riders are not protected by the vehicle like the occupants of a car, motorcyclists account for 91 percent of all people injured in a motorcycle involved crash.

The Maryland Highway Safety Office is committed to helping reduce the number of motorcycle injuries and fatalities on our roadways. Maryland’s motorcycle safety program involves rider education and motorist awareness and addresses both motorcyclists and motorists on how to safely share the road.

THE FACTS





Motor vehicle crashes are a huge threat to public health. Motor vehicle crashes continue to be a leading cause of death in the United States¹. In 2020, approximately 5.3 million crashes were reported, representing a 22 percent decrease from year 2019². However, according to NHTSA early estimates, fatalities in 2021 increased by more than 10 percent over fatalities in 2020. Due to an increase in vehicle miles traveled, the fatality rate for 2021 was 1.33 fatalities per 100 million VMT, representing a slight decrease from the 1.34 fatality rate in 2020³.

¹ CDC Morbidity and Mortality Weekly Report (MMWR)— Motor Vehicle Crash Deaths — United States and 28 Other High-Income Countries, 2015 and 2019, July 1, 2022

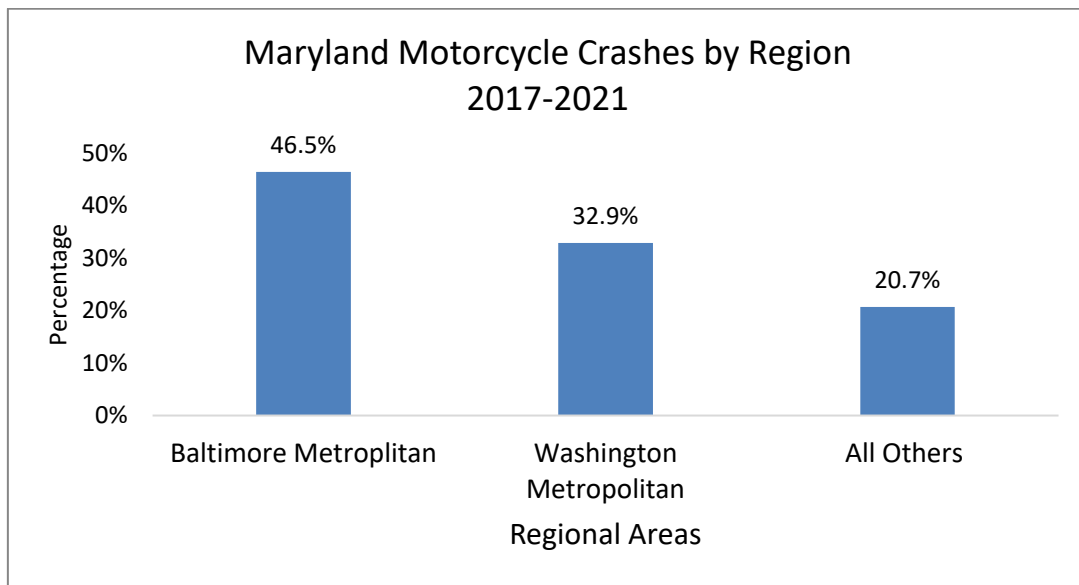
² National Highway Traffic Safety Administration (NHTSA) Traffic Safety Facts 2020 Data: Summary of Motor vehicle Crashes, Report Generated: September 2022

<https://crashstats.nhtsa.dot.gov/Api/Public/ViewPublication/813369>

³ National Highway Traffic Safety Administration (NHTSA) Traffic Safety Facts: Early Estimates of Motor Vehicle Traffic Fatalities and Fatality Rate by Sub-Categories in 2021, Report Generated: May 2022

<https://crashstats.nhtsa.dot.gov/Api/Public/ViewPublication/813298>

- Motorcycle-related crashes in Maryland show a reduction.** Over the past five years in Maryland, the number of total crashes has decreased before trending upwards, with the lowest number of crashes occurred during 2019 (n=1,253). Since then, the number of motorcycle crashes increased by 3 percent in 2020 and by an additional 4 percent in 2021.⁴
- Most motorcycle crashes result in either an injury or fatality.** In 2021, more than 1,300 motorcycle-involved crashes occurred statewide; 77 percent of those crashes resulted in an injury or fatality. This rate is close to three times the rate of all injury or death related crashes occurring across the State. Between 2017 and 2021, motorcycle-related crashes accounted for approximately 14 percent of the State’s crash-related deaths.
- Highly populated regions have the highest concentration of motorcycle crashes⁵.** Most motorcycle-related crashes occurred in Anne Arundel, Baltimore, Montgomery, and Prince George’s Counties, and Baltimore City. The Baltimore metropolitan area accounted for nearly half of all motorcycle crashes.



⁴ In 2020, the world experienced the COVID-19 pandemic which contributed to significant changes in roadway travel and driver behavior. Reduced vehicle miles traveled, and open roadways resulted in an increase in speed and other risky driving behaviors. While overall fatalities increased in 2020, the reduced travel contributed to marked decreases for injury and overall crashes at the statewide and jurisdictional level. Therefore, this anomalous year must be considered when drawing conclusions based on the use of 2020 crash data to evaluate highway safety programs and trends. With COVID still very much a part of life in 2021, though with a gradual return to openness and increased travel, 2021 must also be considered in the context of a national health emergency.

⁵ Baltimore Metropolitan area is comprised of Anne Arundel, Baltimore, Carroll, Harford, Howard and Queen Anne’s Counties, and Baltimore City as designated by the Baltimore Metropolitan Council. The Washington Metropolitan Area is defined as Charles, Frederick, Montgomery, and Prince George’s Counties as designated by the Metropolitan Washington Council of Governments.

- **Motorcycle-involved crashes are highest during the warmer months.** Unlike statewide crashes, which are distributed relatively even throughout year, motorcycle-involved crashes are more prevalent in April through October, with June, July, August, and September being the peak months for motorcycle crashes. Motorcycle-involved crashes gradually declined through the fall and winter months.
- **Weekends and mid-day hours are dangerous times for motorcyclists.** More than half of all motorcycle crashes (55 percent) and fatal motorcycle crashes (56 percent) occurred between Friday and Sunday. In 2021, of the 1,343 motorcycle-related crashes that occurred, approximately 61 percent happened between 1 p.m. and 9 p.m. Fatalities were highest between 3 p.m. and 10 p.m. (54 percent).
- **Motorcyclists in their 20s and early 30s account for a large share of motorcycle crashes.** Motorcycle operators aged 21-34 were highly represented in motorcycle-involved crashes. Between 2017 and 2021, this age group accounted for approximately 34 percent of all motorcycle operators involved in a crash, 36 percent of injured operators and 43 percent of operator fatalities.
- **Males are involved in most motorcycle crashes.** Males accounted for 93 percent of injured motorcycle operators and 97 percent of those killed.

54 percent of fatal motorcycle crashes occur between 3 p.m. and 10 p.m.

###