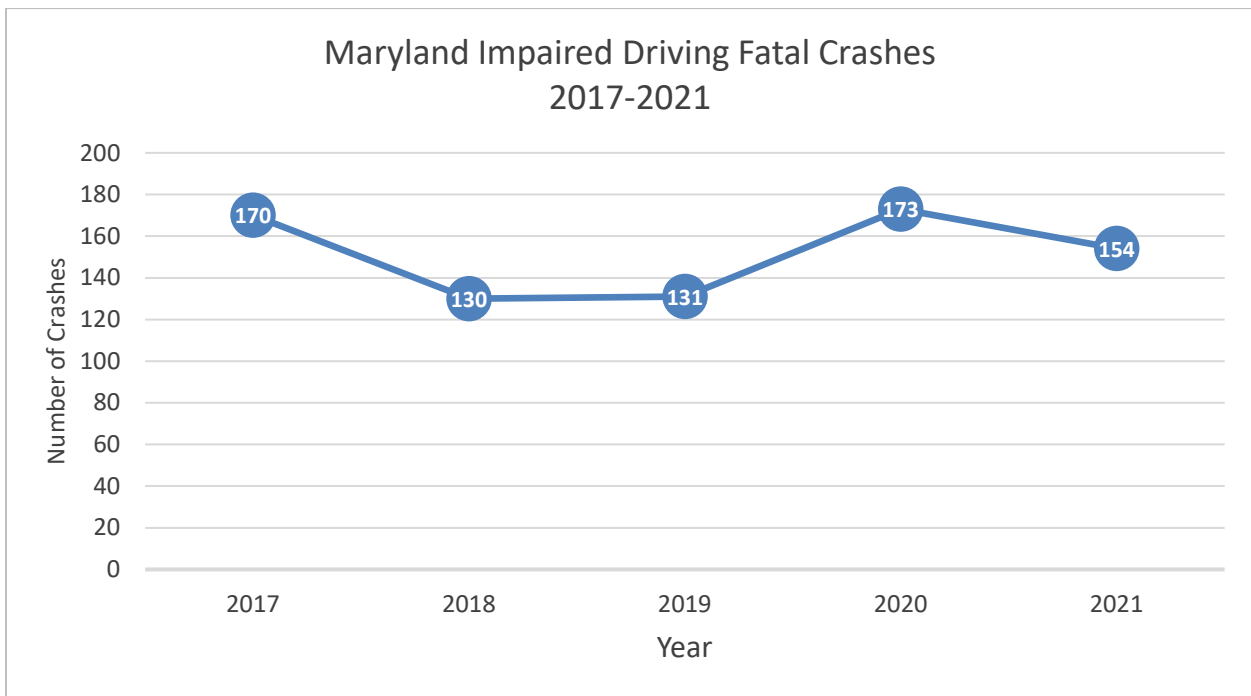
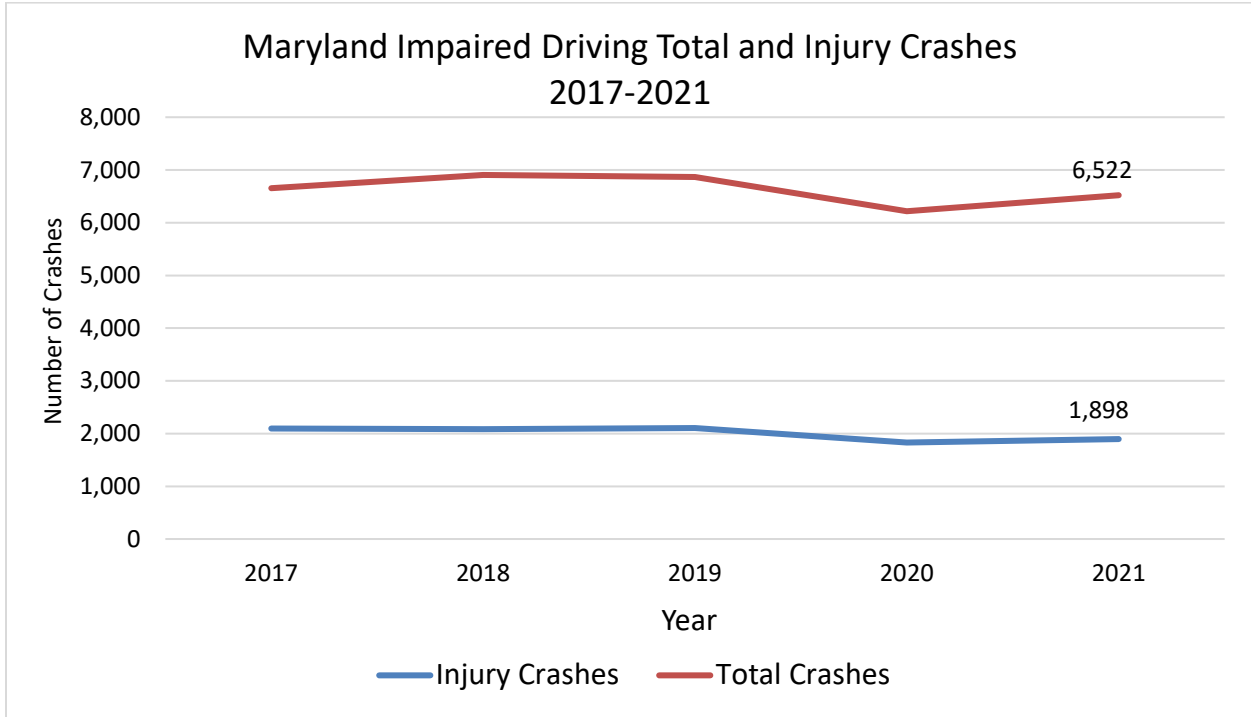


THE FACTS



Impaired driving is defined as: at least one driver in the crash was reported to be under the influence of alcohol and/or drugs. (Please note that this number includes drug impairment and will not match alcohol-impaired fatality figures provided by NHTSA FARS.) Impairment is determined through the driver condition, blood alcohol content, substance use detected, and contributing factor fields on the Maryland crash report (MSP ACRS).

- **Motor vehicle crashes are a huge threat to public health.** Motor vehicle crashes continue to be a leading cause of death in the United States¹. In 2020, approximately 5.3 million crashes were reported, representing a 22 percent decrease from year 2019². However, according to NHTSA early estimates, fatalities in 2021 increased by more than 10 percent over fatalities in 2020. Due to an increase in vehicle miles traveled, the fatality rate for 2021 was 1.33 fatalities per 100 million VMT, representing a slight decrease from the 1.34 fatality rate in 2020³.
- **Crashes involving impaired drivers have seen a small increase.** During the past five years, the number of impaired driving crashes have fluctuated in Maryland⁴, peaking in 2018 and reaching a low in 2020 before increasing by 5 percent in 2021. Injury crashes saw a similar pattern, declining to a five-year low in 2020 before increasing by almost 4 percent in 2021.
- **Fatal crashes related to impaired driving are decreasing.** Between 2017 and 2021, nearly 16,000 persons were either killed or injured in a crash where drugs and/or alcohol were involved. In 2021, the number of fatal crashes related to impaired driving had decreased by 11 percent from 2020. Statewide, however, overall fatal crashes have only decreased by 4 percent since 2020.
- **Metropolitan areas have the highest concentration of impaired driving crashes⁵.** Eighty percent of all impaired driving crashes occurred within the Baltimore and Washington metropolitan areas, with approximately 17 percent occurring in Prince George's County.

¹ CDC Morbidity and Mortality Weekly Report (MMWR)— Motor Vehicle Crash Deaths — United States and 28 Other High-Income Countries, 2015 and 2019, July 1, 2022

² National Highway Traffic Safety Administration (NHTSA) Traffic Safety Facts 2020 Data: Summary of Motor vehicle Crashes, Report Generated: September 2022

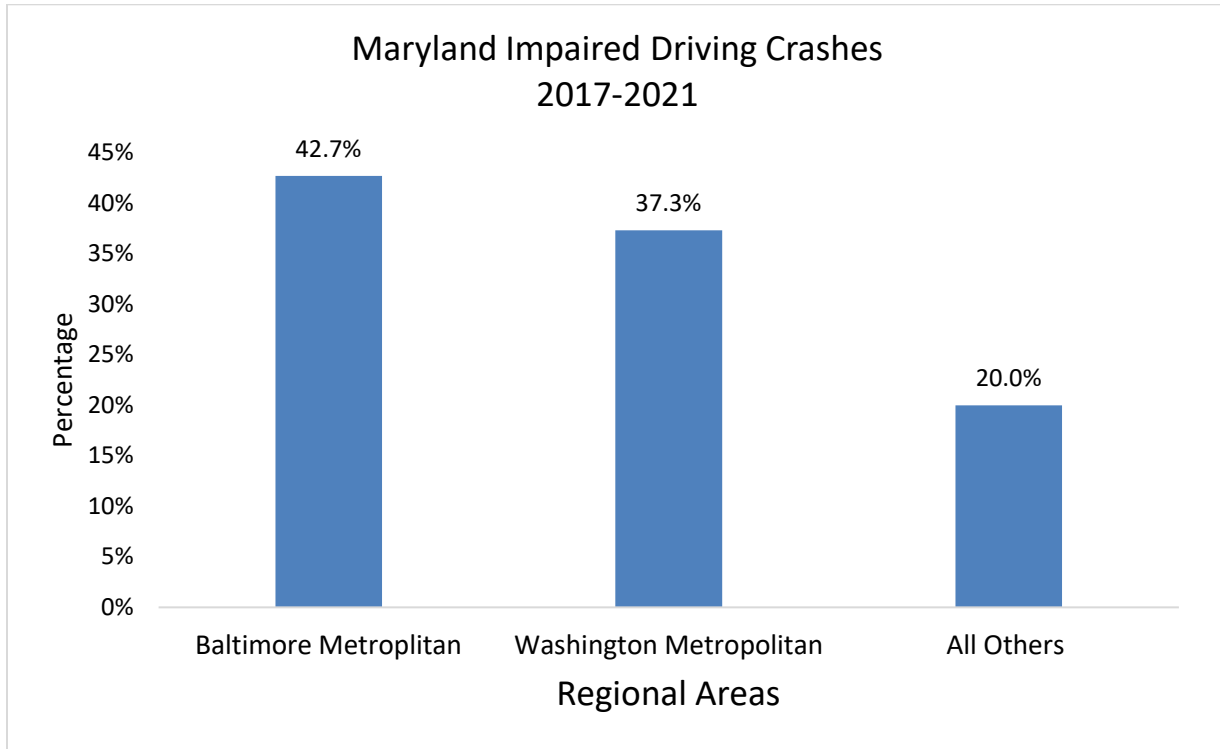
<https://crashstats.nhtsa.dot.gov/Api/Public/ViewPublication/813369>

³ National Highway Traffic Safety Administration (NHTSA) Traffic Safety Facts: Early Estimates of Motor Vehicle Traffic Fatalities and Fatality Rate by Sub-Categories in 2021, Report Generated: May 2022

<https://crashstats.nhtsa.dot.gov/Api/Public/ViewPublication/813298>

⁴ In 2020, the world experienced the COVID-19 pandemic which contributed to significant changes in roadway travel and driver behavior. Reduced vehicle miles traveled, and open roadways resulted in an increase in speed and other risky driving behaviors. While overall fatalities increased in 2020, the reduced travel contributed to marked decreases for injury and overall crashes at the statewide and jurisdictional level. Therefore, this anomalous year must be considered when drawing conclusions based on the use of 2020 crash data to evaluate highway safety programs and trends. With COVID still very much a part of life in 2021, though with a gradual return to openness and increased travel, 2021 must also be considered in the context of a national health emergency.

⁵ Baltimore Metropolitan area is comprised of Anne Arundel, Baltimore, Carroll, Harford, Howard and Queen Anne's Counties, and Baltimore City as designated by the Baltimore Metropolitan Council. The Washington Metropolitan Area is defined as Charles, Frederick, Montgomery, and Prince George's Counties as designated by the Metropolitan Washington Council of Governments.



- Weekends and late evening/early morning hours have the highest number of impaired crashes.** Approximately eight percent of yearly impaired driving crashes occurred each month. Fifty-seven percent of all impaired crashes occurred on a Friday, Saturday, or Sunday, while crashes resulting in death or injury were highest on Saturdays and Sundays. Crashes began to increase from the late afternoon through the early morning hours and saw a dramatic fall after 3 a.m. Approximately 26 percent of fatal crashes occurred between midnight and 3 a.m.
- Impaired drivers in their twenties and thirties are involved in a disproportionate number of crashes.** Fifty-seven percent of impaired drivers were 20–39 years old. In addition, impaired drivers in their twenties and thirties were involved in approximately 59 percent of injury crashes and 56 percent of fatal crashes.

###