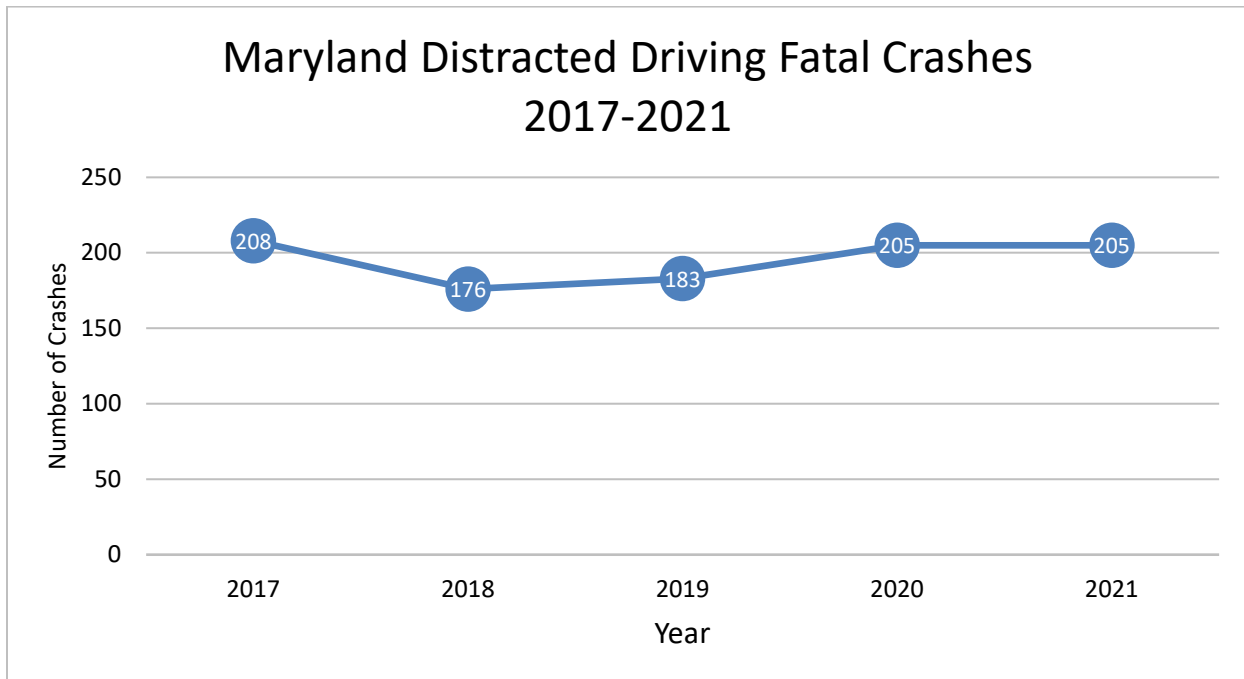
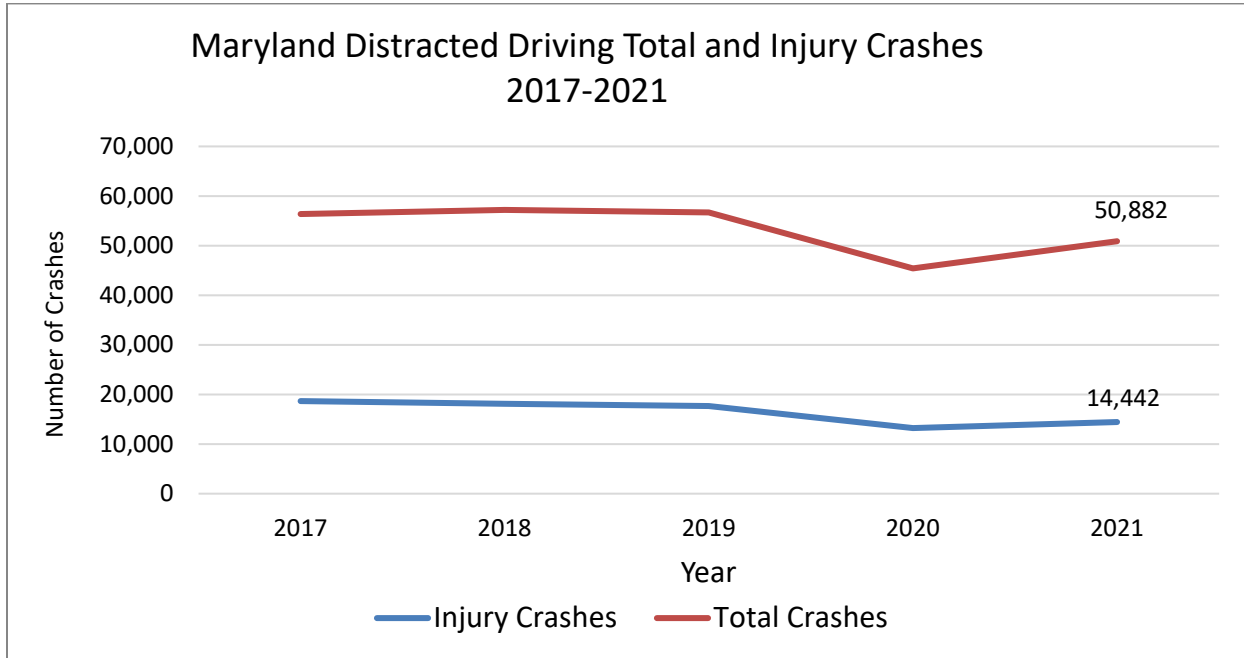


THE FACTS



Distracted driving is defined as: at least one driver in the crash was reported to be distracted, defined by having values of either ‘failure to give full time and attention’ or ‘cell phone in use’ or ‘inattentive’ in the contributing circumstance field, or any of the following values in the driver distracted by field: looked but did not see; other electronic device (tablet, GPS, MP3 player, etc.); by other occupants; by moving object in vehicle; talking or listening on cellular phone; dialing cellular phone; adjusting audio and/or climate controls; using other device controls integral to vehicle; using device/object brought into vehicle (non-electronic); distracted by outside person, object, or event; eating or drinking; smoking related; other cellular phone related; lost in thought; or texting from a cellular phone.

- **Motor vehicle crashes are a huge threat to public health.** Motor vehicle crashes continue to be a leading cause of death in the United States¹. In 2020, approximately 5.3 million crashes were reported, representing a 22 percent decrease from year 2019². However, according to NHTSA early estimates, fatalities in 2021 increased by more than 10 percent over fatalities in 2020. Due to an increase in vehicle miles traveled, the fatality rate for 2021 was 1.33 fatalities per 100 million VMT, representing a slight decrease from the 1.34 fatality rate in 2020³.
- **The number of distracted driving crashes occurring in Maryland⁴ each year remains high.** On average, a total of over 53,000 distracted driving crashes have occurred each year from 2017 to 2021. The number of distracted driving crashes between 2017 and 2019 averaged almost 57,000 per year before dropping by 20 percent in 2020 and increasing again by 12 percent in 2021. Still, distracted driving contributes to 48 percent of all crashes in Maryland.
- **Injuries and fatalities are high in distracted driving crashes.** Approximately 31 percent of distracted driving crashes resulted in injury or death from 2017 to 2021. On average, more than 24,000 people were injured or killed per year because of distracted driving. In 2021, fatalities due to distracted driving slightly increased by 3 percent over the previous year.
- **Weekends and afternoons to early evening hours have the highest number of crashes.** Distracted driving crashes were spread consistently throughout the months and the days of the

¹ CDC Morbidity and Mortality Weekly Report (MMWR)— Motor Vehicle Crash Deaths — United States and 28 Other High-Income Countries, 2015 and 2019, July 1, 2022

² National Highway Traffic Safety Administration (NHTSA) Traffic Safety Facts 2020 Data: Summary of Motor vehicle Crashes, Report Generated: September 2022

<https://crashstats.nhtsa.dot.gov/Api/Public/ViewPublication/813369>

³ National Highway Traffic Safety Administration (NHTSA) Traffic Safety Facts: Early Estimates of Motor Vehicle Traffic Fatalities and Fatality Rate by Sub-Categories in 2021, Report Generated: May 2022

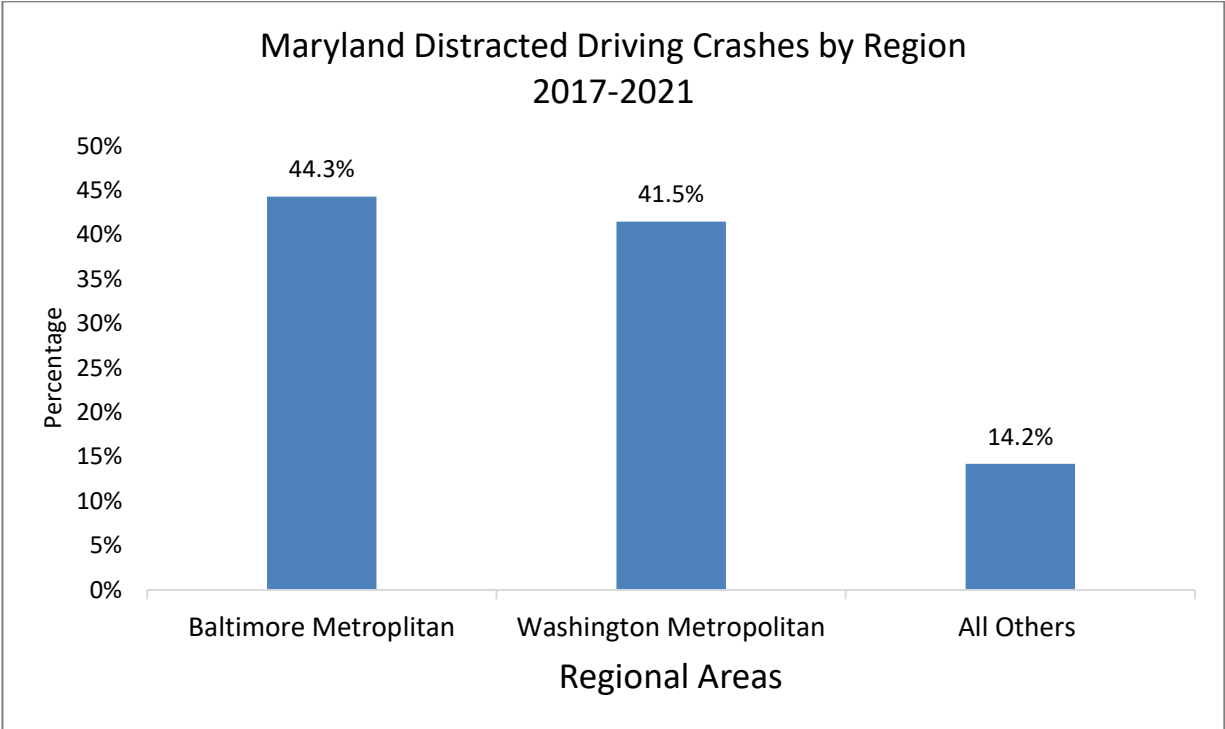
<https://crashstats.nhtsa.dot.gov/Api/Public/ViewPublication/813298>

⁴ In 2020, the world experienced the COVID-19 pandemic which contributed to significant changes in roadway travel and driver behavior. Reduced vehicle miles traveled, and open roadways resulted in an increase in speed and other risky driving behaviors. While overall fatalities increased in 2020, the reduced travel contributed to marked decreases for injury and overall crashes at the statewide and jurisdictional level. Therefore, this anomalous year must be considered when drawing conclusions based on the use of 2020 crash data to evaluate highway safety programs and trends. With COVID still very much a part of life in 2021, though with a gradual return to openness and increased travel, 2021 must also be considered in the context of a national health emergency.

week. However, Fridays showed a slight increase in the number of crashes that occurred, and Sundays experienced the lowest number of distracted driving crashes. On average, the highest number of fatal crashes due to distracted driving occurred on Saturdays. Approximately 52 percent of distracted driving crashes occurred between 11 a.m. and 7 p.m.

- Distracted drivers are of many ages.** Around 70 percent of distracted drivers were between the ages of 21 and 64. Distracted drivers between ages 21 and 39 accounted for about 43 percent of fatalities. Slightly more fatally injured distracted drivers were male (80 percent).
- Metropolitan areas have the highest concentration of distracted driving crashes⁵.** The Baltimore and Washington metropolitan areas accounted for nearly 86 percent of crashes related to distracted driving. Prince George’s County accounted for 23 percent of the state’s distracted driving fatal crashes.

Approximately **80 percent** of distracted driver fatalities are **male**.



###

⁵ Baltimore Metropolitan area is comprised of Anne Arundel, Baltimore, Carroll, Harford, Howard and Queen Anne’s Counties, and Baltimore City as designated by the Baltimore Metropolitan Council. The Washington Metropolitan Area is defined as Charles, Frederick, Montgomery, and Prince George’s Counties as designated by the Metropolitan Washington Council of Governments.